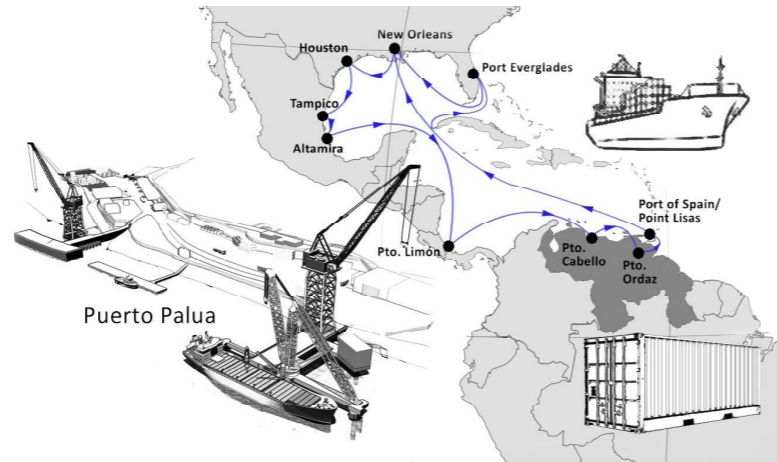


I.T.L.S. INTEGRATED TRANSPORT LOGISTICS SERVICES

Our services include receiving, handling and transport, including permit processing and coordination with local authorities to assure a smooth transition to final destination.

I.T.L.S. is part of the FAPCO Group of companies, comprised of **maritime shipping, barge operations, port and terminal operations, trucking and over the road transport.** The services include the necessary logistics to assure that your cargo travels safely from origin to destination.

Our professional analysis of the complete logistics process, by experts that know what it takes to handle and transport projects and heavy lifts, guarantees the safe and secure delivery of your cargo to it's final destination.



The services include technical engineering for lifting, securing and transporting large, heavy and oversized components via truck, barge, rail and/or vessel.

Additionally, we have access to external support for transporting complex projects on ships or barges and have the capacity to transport by land overdimensional units up to 500 tons.



Our infrastructure includes landing craft and certified barges for river transportation of heavy lift and out of gauge cargo that, due to weight and/or dimension restrictions, cannot be transported overland.



Why I.T.L.S. is an excellent alternative?:

- We offer full service, project-specific heavy lift transport and heavy lift assembly concepts under due consideration of requirements imposed by authorities and the infrastructure as well as coordinating with interfaces (plant planning, civil engineering, etc.),
- Our customers receive completely integrated logistics services. The client sends the load at origin and receives it at destination. We take care of everything.
- A dedicated single point of contact, for all service stages.
- All services are in-house, we do not rely on third parties.
- One-stop resources that facilitate shipping and logistics needs and integrate time and money-saving services into one cost-effective bundle.
- More than 20 years of teamwork and proven experience to ensure troublefree, accident-free and on-schedule transport operations.
- Excellent communication and coordination between individual departments, vendors and local authorities.
- Ability to work effectively with and between business information technology functions to carry out the necessary actions and ensure the expected outcome.

Address: Industrial zone CVG F.M.O. Sector Palua UD 171, At the right bank of the Orinoco river, mile 181, San Felix, Caroni municipality, Edo. Bolivar

Phone: Operations: + 58 286 931 52 41 - Security Dock: + 58 286 932 37 95

For more information visit : www.muellepalua.com.ve e-mail: informacion@muellepalua.com.ve

PALUA PORT

Public commercial port for handling general break bulk, out of gauge, heavy lift, and bulk cargoes.

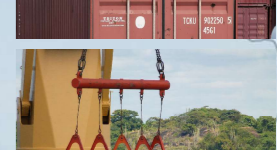
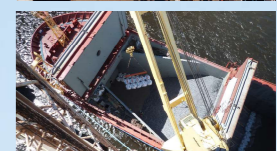
Latitude: North 08° , 21' , 55"

Length: West 62° , 41' , 20"

Industrial zone CVG F.M.O. Sector Palua UD 171

At the right bank of the Orinoco river, mile 181

San Felix, Caroni municipality, Edo. Bolivar



We offer personalized attention to our customers, and have and continue to play an important part in the development of the region.

PALUA PORT

GENERAL CHARACTERISTICS

Palua port was originally conceived as a platform for loading and unloading project cargoes for Corporacion Venezolana de Guayana (CVG). Currently Palúa is a modern port facility with newly updated infrastructure offering stevedoring and terminal operations for the loading and discharging of general cargo, rolling stock, containers, big bags, break-bulk, and bulk cargoes, also providing warehouse receiving, storage and container consolidation and deconsolidation services. The port efficiently serves our customers and plays a vital role in the development of the region.



1
2 berths :



2
Capacity for loading, unloading and mobilization of heavy lift and out of gauge pieces :
Handling pieces up to 60 meters long and 12 meters high.



3
Storage capacity:
2,500m² of covered warehouses with 10,000m³ of capacity and 35,000 m² of area to store.



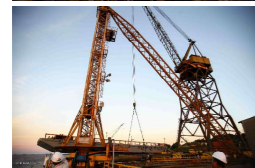
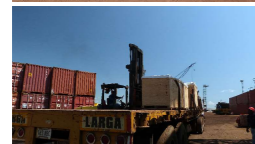
4
Transport service:
We offer special transportation equipment (modular, Lowboy and tractor trailers) for receiving and delivering cargo both inside and outside of the port area.



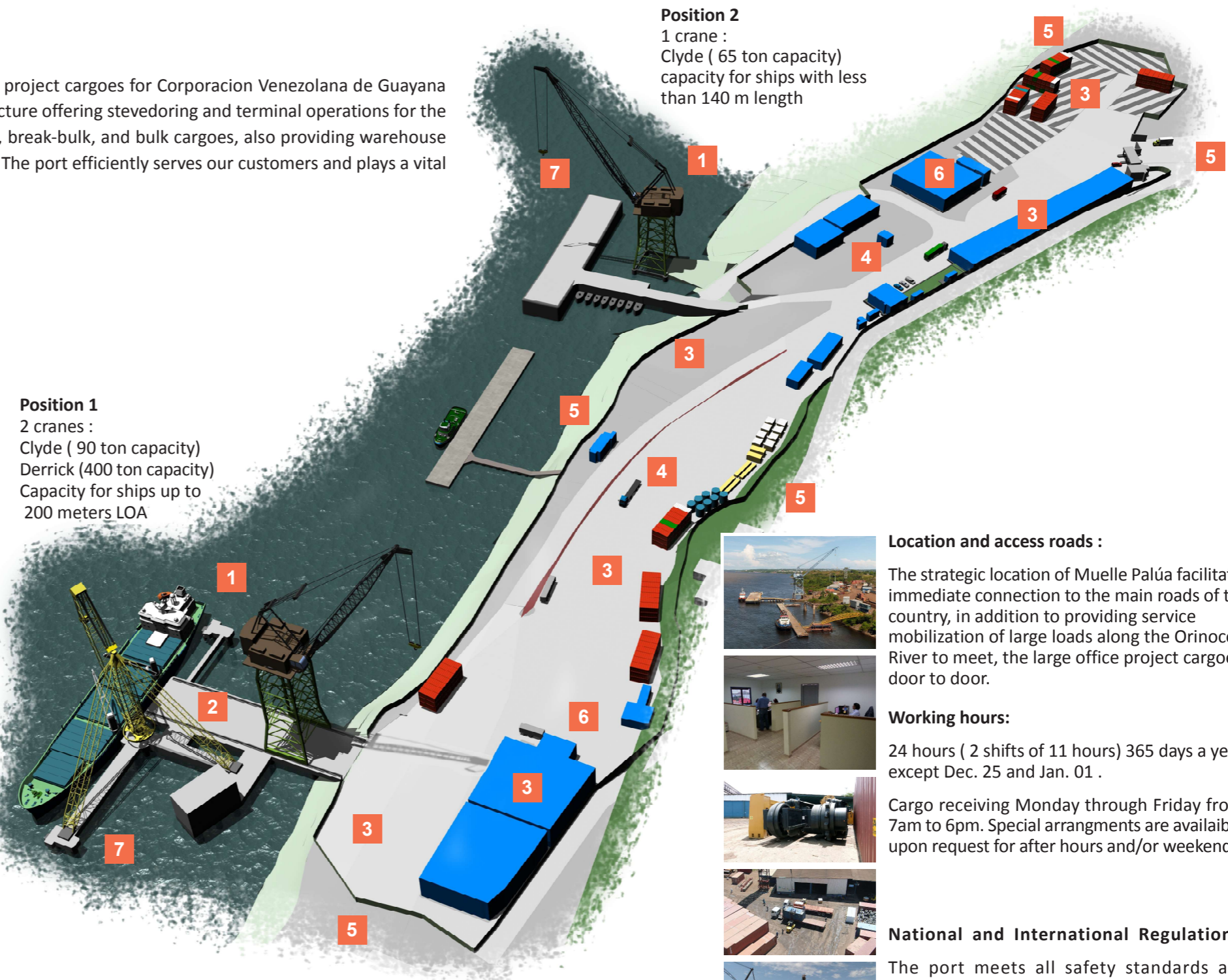
5
Security:
Fire equipment, closed perimeter and permanent private security with closed circuit TV (CCTV) ensuring the safety of the cargo remaining in the dock.



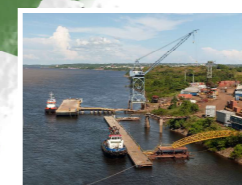
6
Equipment:
Flexible fleet of equipment including forklifts (4ton , 7Ton , 10ton , 16ton and 13ton), tractor trailers and special transport equipment (low-boy and commit) for handling cargo within and outside of the port facility.



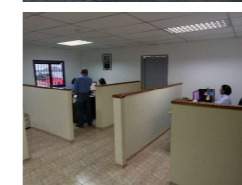
7
Draft :
No draft problems throughout the year, the minimum is 14 meters and maximum is 24 meters.



The port of Palua meets the growing demand for facilities for project cargo handling and special transport. With 20 years of experience, excellent service providers, specialised terminals and dedicated staff, no cargo is too big or too heavy to handle. It is the only certificated port for handling special projects on the Orinoco river. All special projects destined to the south east of Venezuela are directed to this terminal.



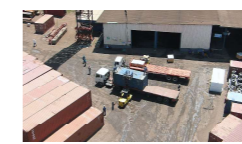
Location and access roads :
The strategic location of Muelle Palúa facilitates immediate connection to the main roads of the country, in addition to providing service mobilization of large loads along the Orinoco River to meet, the large office project cargoes, door to door.



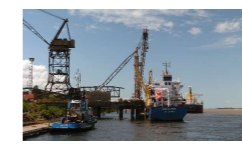
Working hours:
24 hours (2 shifts of 11 hours) 365 days a year except Dec. 25 and Jan. 01 .



Cargo receiving Monday through Friday from 7am to 6pm. Special arrangements are available upon request for after hours and/or weekends.



National and International Regulations:
The port meets all safety standards and regulations for the types of services provided. (Siseinop & ISPS) .



All equipment items including hoisting, rigging and crane operators by nationally recognized companies. Palua is the only port 100% certified by the INEA on the Orinoco river.

